

SALIVA SWAB

BUCCAL(SALIVA) SWAB APPLICATOR WITH BREAKPOINT

Saliva Swab is a tool for biopsy for collecting saliva in the mouth, which has a cylindrical shape of plastic material.



SLS-1 (1128)

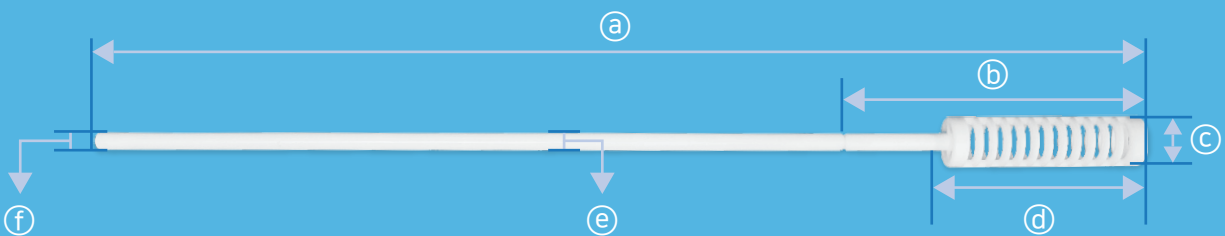


SLS-2 (1129)

PRODUCT COMPOSITION

Cat. No.	Swab(Quantity)	Protective tube	Break point	Case (Type)
SLS-1 (1128)	0 (1)	X	0	-
SLS-2 (1129)	0 (1)	X	0	-

DEMENSION

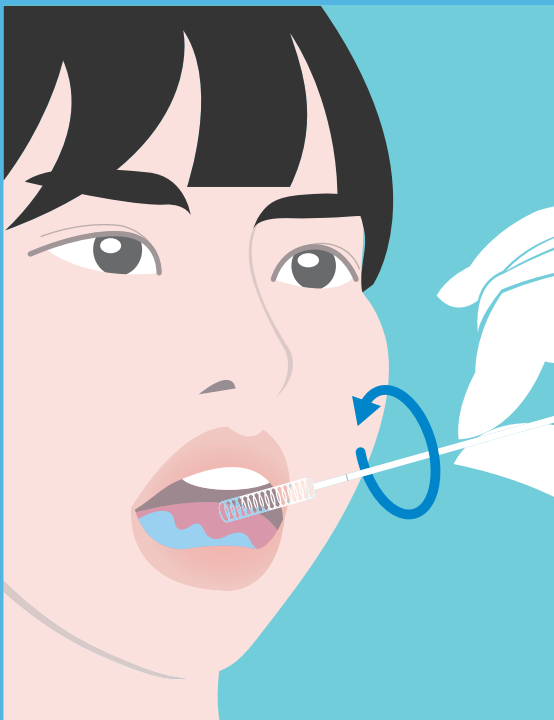


No	Cat. No.	Full length A(mm)	Length from head to cut B(mm)	Head thickness C(mm)	Head length D(mm)	Stick thickness E(mm)	Handle thickness F(mm)
1	SLS-1 (1128)	150	43	7.5	28	2.6	2.6
2	SLS-2 (1129)	150	43	7.5	34	2.6	2.6

Margin of error: ±10%



1. Massage both cheeks so that saliva is sufficiently filled in your mouth.



2. Slowly swab through the stagnant saliva so that saliva can be sufficiently coated on the swab.