



Agar Gel Transport Medium

Ordering Information : These products are medical devices certified as class II by the Korean FDA.

Cat.No	Description	Packaging	
Agar gel Transport Swab : AMIES AGAR GEL- NO CHARCOAL			
AD1-1S-N1P AD1-2S-N1P	Standard Single Swab [Applicator : POM with break point, Swab Tip : Nylon, Cap color : Clear] Standard Single Swab [Applicator : POM w/o break point, Swab Tip : Nylon, Cap color : Clear]	100 / Case	
AD2-1-N1P AD2-2-N1P	Standard Double Swab [Applicator : POM with break point, Swab Tip : Nylon, Cap color : Blue] Standard Double Swab [Applicator : POM w/o break point, Swab Tip : Nylon, Cap color : Blue]		
AD3-1S-N1P AD3-2S-N1P	Standard Flocked Swab [Applicator : POM with break point, Swab Tip : Flocked Nylon, Cap color : Clear] Standard Flocked Swab [Applicator : POM w/o break point, Swab Tip : Flocked Nylon, Cap color : Clear]		
AD4-1S-N1P AD4-2S-N1P	Mini tip Flocked Swab [Applicator : POM with break point, Swab Tip : Flocked Nylon, Cap color : Clear] Mini tip Flocked Swab [Applicator : POM w/o break point, Swab Tip : Flocked Nylon, Cap color : Clear]		
Agar gel Transport Swab : AMIES AGAR GEL . with CHARCOAL			
AD5-1S-N1P AD5-2S-N1P	Standard Single Swab [Applicator : POM with break point, Swab Tip : Nylon, Cap color : Clear] Standard Single Swab [Applicator : POM w/o break point, Swab Tip : Nylon, Cap color : Clear]		100 / Case
AD6-1-N1P AD6-2-N1P	Standard Double Swab [Applicator : POM with break point, Swab Tip : Nylon, Cap color : Blue] Standard Double Swab [Applicator : POM w/o break point, Swab Tip : Nylon, Cap color : Blue]		
AD7-1S-N1P AD7-2S-N1P	Standard Flocked Swab [Applicator : POM with break point, Swab Tip : Flocked Nylon, Cap color : Clear] Standard Flocked Swab [Applicator : POM w/o break point, Swab Tip : Flocked Nylon, Cap color : Clear]		
AD8-1S-N1P AD8-2S-N1P	Mini tip Flocked Swab [Applicator : POM with break point, Swab Tip : Flocked Nylon, Cap color : Clear] Mini tip Flocked Swab [Applicator : POM w/o break point, Swab Tip : Flocked Nylon, Cap color : Clear]		
Agar gel Transport Swab : STUART AGAR GEL MEDIUM			
AD9-1S-N1P AD9-2S-N1P	Standard Single Swab [Applicator : POM with break point, Swab Tip : Nylon, Cap color : Clear] Standard Single Swab [Applicator : POM w/o break point, Swab Tip : Nylon, Cap color : Clear]	100 / Case	
AD10-1-N1P AD10-2-N1P	Standard Double Swab [Applicator : POM with break point, Swab Tip : Nylon, Cap color : Blue] Standard Double Swab [Applicator : POM w/o break point, Swab Tip : Nylon, Cap color : Blue]		
AD11-1S-N1P AD11-2S-N1P	Standard Flocked Swab [Applicator : POM with break point, Swab Tip : Flocked Nylon, Cap color : Clear] Standard Flocked Swab [Applicator : POM w/o break point, Swab Tip : Flocked Nylon, Cap color : Clear]		
AD12-1S-N1P AD12-2S-N1P	Mini tip Flocked Swab [Applicator : POM with break point, Swab Tip : Flocked Nylon, Cap color : Clear] Mini tip Flocked Swab [Applicator : POM w/o break point, Swab Tip : Flocked Nylon, Cap color : Clear]		
Agar gel Transport Swab : CARY - BLAIR AGAR GEL MEDIUM			
AD13-1S-N1P AD13-2S-N1P	Standard Single Swab [Applicator : POM with break point, Swab Tip : Nylon, Cap color : Clear] Standard Single Swab [Applicator : POM w/o break point, Swab Tip : Nylon, Cap color : Clear]		100 / Case
AD14-1-N1P AD14-2-N1P	Standard Double Swab [Applicator : POM with break point, Swab Tip : Nylon, Cap color : Blue] Standard Double Swab [Applicator : POM w/o break point, Swab Tip : Nylon, Cap color : Blue]		
AD15-1S-N1P AD15-2S-N1P	Standard Flocked Swab [Applicator : POM with break point, Swab Tip : Flocked Nylon, Cap color : Clear] Standard Flocked Swab [Applicator : POM w/o break point, Swab Tip : Flocked Nylon, Cap color : Clear]		
AD16-1S-N1P AD16-2S-N1P	Mini tip Flocked Swab [Applicator : POM with break point, Swab Tip : Flocked Nylon, Cap color : Clear] Mini tip Flocked Swab [Applicator : POM w/o break point, Swab Tip : Flocked Nylon, Cap color : Clear]		

ISO
CERTIFIED
13485

ISO
CERTIFIED
9001

GMP
CERTIFIED
의료기기 제조 및
품질관리기준

BACTERIAL TRANSPORT SYSTEM

Bacterial Transport Medium with Agar Gel

N-SWAB TRANSPORT™

Plain Dry Swab in Tube, Liquid Media & Agar Transport Swabs

Noble Biosciences, Inc. is the company of collection, transport and preservation system for the biopsy 생체검사를 위한 검체 채취 및 수송배지 전문회사

Agar Gel Transport Medium 사용설명서 :

- 제품명 : Agar Gel Transport Medium
- Cat.No : AD1-1-N1P, AD1-1S-N1P, AD1-2-N1P, AD1-2S-N1P, AD2-1-N1P, AD2-2-N1P, etc.
- 허가번호 : 제인 15-4092호

해당제품 : AD1-1-N1P, AD1-1S-N1P, AD1-2-N1P, AD1-2S-N1P, AD2-1-N1P, AD2-2-N1P, AD3-1-N1P, AD3-1S-N1P, AD3-2-N1P, AD3-2S-N1P, AD4-1-N1P, AD4-1S-N1P, AD4-2-N1P, AD4-2S-N1P, AD5-1-N1P, AD5-1S-N1P, AD5-2-N1P, AD5-2S-N1P, AD6-1-N1P, AD6-2-N1P, AD7-1-N1P, AD7-1S-N1P, AD7-2-N1P, AD7-2S-N1P, AD8-1-N1P, AD8-1S-N1P, AD8-2-N1P, AD8-2S-N1P, AD9-1-N1P, AD9-1S-N1P, AD9-2-N1P, AD9-2S-N1P, AD10-1-N1P, AD10-2-N1P, AD11-1-N1P, AD11-1S-N1P, AD11-2-N1P, AD11-2S-N1P, AD12-1-N1P, AD12-1S-N1P, AD12-2-N1P, AD12-2S-N1P, AD13-1-N1P, AD13-1S-N1P, AD13-2-N1P, AD13-2S-N1P, AD14-1-N1P, AD14-2-N1P, AD15-1-N1P, AD15-1S-N1P, AD15-2-N1P, AD15-2S-N1P, AD16-1-N1P, AD16-1S-N1P, AD16-2-N1P, AD16-2S-N1P.

1. 사용용도

Agar Gel Transport Medium은 멸균된 제품으로서 임상 검체인 호기성, 혐기성 박테리아 등의 채취, 운반 및 보존 등의 목적으로 사용됩니다. Amies with charcoal, Amies without charcoal, Stuart, Cary-Blair medium are supplied depends on specimen. There are several kinds of swab tip such as standard swab, standard/mini-tip flocked swab with/without breakpoint

2. 배지의 조성분

- Amies agar gel without charcoal : Sodium Chloride, Potassium Chloride, Disodium Phosphate, Calcium Chloride, Magnesium Chloride, Monopotassium phosphate, Sodium thioglycollate, Agar, Distilled water
- Amies agar gel with charcoal : Sodium Chloride, Potassium Chloride, Disodium Phosphate, Calcium Chloride, Magnesium Chloride, Monopotassium phosphate, Sodium thioglycollate, Charcoal, Agar, Distilled water
- Stuart agar gel : Sodium Glycerophosphate, Calcium Chloride, Mercaptoacetic acid, Agar, Distilled water
- Cary-Blair agar gel : Disodium Hydrogen phosphate, Sodium Chloride, Calcium Chloride, Sodium thioglycollate, Distilled water

본 제품의 품질 관리는 수집된 미생물과 바이러스 등 임상 검체의 안전한 수송, 보관 및 회수를 위해 국제적으로 인증된 CLSI (Clinical and Laboratory Standards Institute)의 QC guideline, M40-A2 등의 실험 방법을 따르고 있습니다. GMP시설과 ISO 13485, ISO 9001 인증을 바탕으로 생산 되었으며 각 제품은 Korean FDA의 신고 또는 허가 품목입니다.

The test procedures employed for determining bacterial and viral viability performance and recovery of clinical specimens were based upon the quality control methods described in Clinical and Laboratory Standards Institute(CLSI) M40-A2 and others. To optimize manufacturing and sales requirements for medical devices, we have certificates of GMP, ISO 9001, ISO 13485, CLSI membership and Korean FDA. Noble Biosciences, Inc. is recognized as a member of CLSI.

3. 성상 및 특성

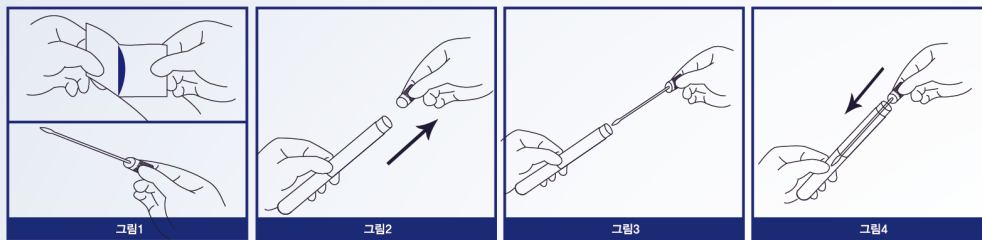
Agar Gel Transport Medium 중에 Amies agar gel, Stuart agar gel, Cary-Blair agar gel은 무색을 띄고, Amies agar gel with charcoal은 검정색을 띄며 투명 플라스틱 튜브에 5ml 용량이 주입되어 있다.



4. 사용방법

- 포장지를 개봉 후 검체 채취도구(Cap with Swab)을 사용하여 검체를 채취한다.
- Swab의 헤드부분에 코팅될 정도로 검체를 채취하도록 한다.
* Swab에 무리한 힘을 가하면 breakpoint 부분이 부러질 수 있으므로 주의해야 한다.
(특히 breakpoint가 있는 제품 : AD1~16-X-N1P (X=>1 : with breakpoint, 2 : without breakpoint))
* 검체를 채취하는 동안 잠재적 오염을 최소화하기 위해서 스왐(Swab)의 끝은 검체를 채취하고자 하는 부분에만 접촉되도록 한다.
- 수송배지 튜브의 캡을 제거하고 채취된 검체스왐을 수송배지 튜브안으로 넣는다.
- 캡을 아래로 밀어서 수송배지 튜브를 잠근후 튜브 라벨에 검체명, 성별, 나이, 일련번호, 채취일, 검체의 종류 등을 기입한다.
- 가능한 신속히 검사실로 운반한다.
* 운반이 늦어질 경우, 냉장(2-8°C)에 보관 후 72시간 이내에 검사한다. 실온에서 보관 중인 경우는 48시간 이내에 검사한다.

Agar Gel Transport Medium 사용방법



- [그림1] 포장지를 제거하고 검체채취 스왐을 이용하여 검체를 채취합니다.
[그림2] 수송배지 튜브의 캡을 제거합니다. (돌리면서 위로 당기세요.)
[그림3] 수송배지 튜브에 채취한 검체 스왐을 넣는다. (튜브의 내벽에 묻지 않도록 주의하면서 넣는다.)
[그림4] 캡을 아래로 밀어서 수송배지 튜브를 잠근후 환자의 정보를 기재하여 검사기관으로 수송합니다.

5. 저장방법 및 유효기간용

- 저장방법 : 4 - 25°C
- 유효기간 : 제조일로부터 20개월

6. 포장단위

- 1 pc (1개씩 개별포장), 100 pcs/Case

7. 사용시 주의사항

- 사용 전 가열하거나 얼리지 않는다.
- 유효기간이 경과된 제품은 사용하지 않는다.
- 손상된 부분이 있거나 용액이 새 경우는 사용하지 않는다.
- 샘플의 채취, 보관, 이동 중에 혼동되지 않도록 튜브 라벨에 반드시 기록한다.
- 시약의 사용 시 피부나 점막에 닿지 않도록 유의한다.
- 본 제품은 1회용 의료기기입니다. 개봉되거나 사용된 제품들은 모두 소각 또는 소독하여 폐기한다.

작성년월일 : 2018.11.27

1 Medium Components (ADX-1-N1P : X=>

1,2,3,4 : Amies Agar Gel-wo/ charcoal, 5,6,7,8 : Amies Agar Gel-with charcoal
9,10,11,12 : Stuart Agar Gel, 13,14,15,16 : Cary-Blair Agar Gel)

2 Tube types (AD1-1X-N1P : X=> with S-screw type, without S-General tube)

[General tube]
[Screw type tube]



3 Swab types (ADX-1-N1P : X=>

1,5,9,13 : Standard Nylon Single Swab, 2,6,10,14 : Standard Nylon Double Swab
3,7,11,15 : Standard Flocked Swab, 4,8,12,16 : Mini-tip Flocked Swab)

4 With/without Breakpoint

(AD1-X-N1P : X=>1 : With Breakpoint , 2 : Without Breakpoint)

[With Breakpoint]
[Without Breakpoint]



- Amies, Stuart and Cary-Blair Medium are supplied depends on specimen.
- The test procedures for quality control are based upon the quality control methods described in CLSI M40-A2 and others.
- Biopsy procedure swab containing modified medium for aerobes, anaerobes and fastidious bacteria can collect and transport specimens with optimal viability and condition
- Agar medium containing swab for specimen collection, transport and diagnostic is certified as class II medical device.
- Biopsy procedure kit containing swab as class II medical device is packaged individually.
- There are several kinds of swab tip such as standard nylon swab, standard flocked swab, mini tip flocked swab with / without breakpoint

